



R1SX Unitech Inciso 2 Rubino LUX 20x20



R1TW Unitech Bianco Diamantato 10x30
 R1UB Unitech Bianco LUX 10x30
 94D9 Unitech Bianco 10x10
 94G4 Unitech Bianco Grip 10x10



R1QA Unitech Topazio 20x20 pav. R10 B

Unitech

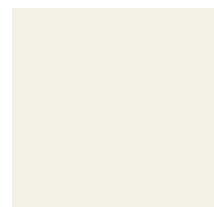


| | | | | | | | | | | | | | | | | | |
|--|--|--|-------|-----------|------------|------------|------------|----------|------------|------------|--------------------------|-----------------------------|---------------------|-----------------------------|--|--|--|
| | | | | R9 | | R10 | | B | | R12 | | PENDULUM classe 1 | | PENDULUM classe 3 | | | |
| | | | 20x20 | | 20x20 GRIP | | 20x20 GRIP | | 10x10 GRIP | | 10x10 Pav / Riv Blla | | 10x10 GRIP Pav Blla | | | | |
| | | | | | | | | | | | R10 B 20x20 GRIP Pav Bll | | | | | | |
| | | | | | | | | | | | R9 Pav Bll | | | | | | |

gamma cromatica

colour range / farbpalette / gamme chromatique / gama de colores / гамма цветов

LUX



Bianco Lux



Cristallo Lux



Argento Lux



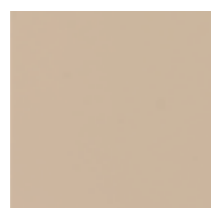
Cenere Lux



Nero Lux



Beige Lux



Crema Lux



Incenso Lux



Terra Lux



Cacao Lux



Lime Lux



Menta Lux



Smeraldo Lux



Turchese Lux



Topazio Lux



Oceano Lux



Giallo Lux

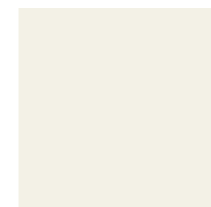


Arancio Lux



Rubino Lux

MATT



Bianco

R9

R10B

E

F

G



Cristallo

E



Argento

R9

R10B

E

F

G



Cenere

R9

R10B

E

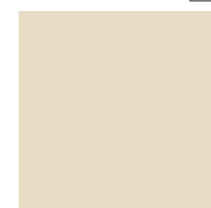
E

F



Nero

E



Beige

E

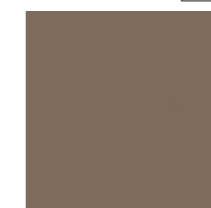


Crema

R10B

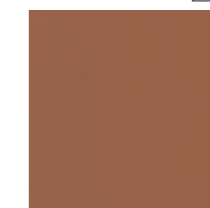
E

G



Incenso

E



Terra

E



Cacao

E



Lime

E



Menta

E



Smeraldo

E



Turchese

E



Topazio

R10B

E

F



Oceano

E



Giallo

E



Arancio

E



Rubino

E

LUX / MATT



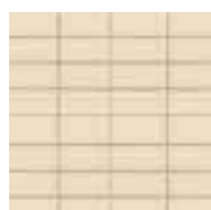
Inciso 1 Bianco



Inciso 1 Beige



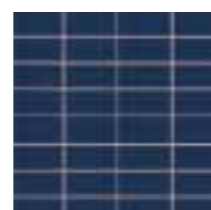
Inciso 2 Bianco



Inciso 2 Beige



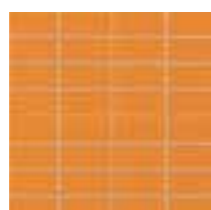
Inciso 2 Lime



Inciso 2 Oceano



Inciso 2 Giallo



Inciso 2 Arancio

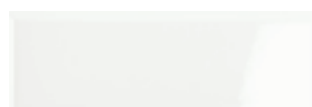


Inciso 2 Rubino

Nei fondi preincisi, per ottenere le fughe uguali, posare il prodotto con fuga minima / In order to ensure uniform joints, pre-cut base tiles should be laid with minimum joint / Dans les fonds pré-gravés, pour obtenir les mêmes joints partout, poser le produit avec un minimum de joint / Die vorgeschchnittenen Grundfliesen müssen mit Minimalfuge verlegt werden / La colocación del producto deberá ser con una junta mínima / Надрезанная фоновая плитка укладывается с минимальным швом.

diamantato* lux

bevelled / abgerundet / biseauté / biselado / с фаской



Bianco



Beige



Incenso



Turchese



Oceano



Nero

pezzi speciali

trims / spezialteile / pièces spéciales / piezas especiales / специальные изделия

| | BIANCO | CENERE | TOPAZIO | | M ² | KG | | GRUPPO EN |
|---------------|----------|----------|----------|----|----------------|------|-----|--------------------|
| BTS. 10x20 | 98B9 | 98B8 | R1RH | 25 | - | 9,87 | 7,5 | BIII EN 14411_L |
| CNE. 3x20 | 8S23 | 8S22 | - | 10 | 0,06 | 0,90 | - | BIII EN 14411_L |
| CNI. 3x20 | 8S27 | 8S26 | - | 10 | 0,06 | 0,90 | - | BIII EN 14411_L |
| AE. 3x10 | R1RD | - | - | 10 | 0,03 | 0,35 | - | BIII EN 14411_L |
| AI. 3x10 | R1RS | - | - | 10 | 0,03 | 0,35 | - | BIII EN 14411_L |
| PI. 3x3 | 8S19 | - | - | 10 | 0,01 | 0,10 | - | BIII EN 14411_L |
| UI. 3x3 | 8S15 | - | - | 10 | 0,01 | 0,10 | - | BIII EN 14411_L |
| UE. 3x3 | R1RU | - | - | 10 | 0,01 | 0,10 | - | BIII EN 14411_L |

tech info



Mosaico preinciso da stuccare
Pre-cut mosaic, requires grouting
Mit Fugen zu verlegendes, vorgeschchnittenes Mosaik
Mosaïque pré-coupée à jointoyer
Mosaico pregrabado que hay que estucar
Мозаика с насечкой для затирки

*

Struttura a rilievo di spessore complessivo 9 mm, abbinabile al formato 10x30 Lux di spessore 7,5 mm / Relief texture with a total thickness of 9 mm; can be used along with the 7.5 mm thick 10x30 lux size / Reliefstruktur mit einer Gesamtstärke von 9 mm passend zum Format 10x30 lux mit 7,5 mm Stärke / Structure en relief d'une épaisseur totale de 9 mm pouvant être associée au format 10x30 lux de 7,5 mm d'épaisseur / Estructura en relieve de espesor total 9 mm combinable con el formato 10x30 lux de 7,5 mm de espesor / Рельефная структура общей толщиной 9 мм, сочетаемая с форматом 10x30 люкс толщиной 7,5 мм.

| | BIANCO | CRISTALLO | ARGENTO | CENERE | NERO | BEIGE | CREMA | INCENSO | TERRA | CACAO | LIME | MENTA |
|-------------------|--------|-----------|---------|--------|------|-------|-------|---------|-------|-------|------|-------|
| 20x20 | OT98 | R1PF | R1PC | OT96 | OT97 | R1PA | R1PD | | | | R1PE | R1PK |
| 20x20 | RN46 | R1NO | R1NL | RN50 | RN51 | R1NJ | R1NM | R1NZ | R1NS | R1NU | R1NN | R1NT |
| 10x10 | 4Y29 | | | | | | | | | | | |
| 10x10 PC | 4Y39 | | | | | | | | | | | |
| 10x10 | 94D9 | R1QH | 94E1 | 94E2 | R1QF | | | | | | | |
| 10x10 PC | 94F1 | | | | | | | | | | | |
| 10x30 | R1U8 | R1U9 | | R1UA | R1UB | | R1UC | | R1VD | R1UD | | |
| 10x30 | R1UT | R1UU | | R1UV | R1UW | | R1UX | | R1UY | R1UZ | | |
| 10x30 DIAMANTATO | R1TW | | | R1TX | R1TY | | R1TZ | | | | | |
| 20x20 INCISO 1 | RV60 | | | | | R1SM | | | | | | |
| 20x20 INCISO 1 | RW09 | | | | | R1RZ | | | | | | |
| 20x20 INCISO 2 | RV53 | | | | | R1SN | | | | R1SR | | |
| 20x20 INCISO 2 | RW02 | | | | | R1SA | | | | | | |
| 20x20 R9 | R1PG | R1PS | R1PW | | | | | | | | | |
| 20x20 GRIP R10 B | R1PY | R1PZ | R1QD | | | R1QC | | | | | | |
| 10x10 GRIP R12 | 94G4 | | | | | | | | | | | |
| 10x10 GRIP R12 PC | 94H0 | | | | | | | | | | | |

| | SMERALDO | TURCHESE | TOPAZIO | OCEANO | GIALLO | ARANCIO | RUBINO | BOX | PALLET | GRUPPO EN | | | | | |
|--|----------|----------|---------|--------|--------|---------|--------|----------------|--------|----------------|----|--------|---------|-----|--------------------|
| | | | | | | | | M ² | KG | M ² | KG | ≠ mm | | | |
| | R1PN | R1PP | R1PM | R1PI | R1PH | R1PB | R1PQ | 40 | 1,60 | 19,48 | 75 | 120,00 | 1460,92 | 7 | BIII EN 14411_L |
| | R1NW | R1NX | R1NV | R1NR | R1NQ | R1NK | R1NY | 37 | 1,48 | 19,24 | 75 | 111,00 | 1443,06 | 7,5 | BIII EN 14411_L |
| | | | | | | | | 100 | 1,00 | 13,10 | 72 | 72,00 | 943,15 | 7 | BIIb EN 14411_K |
| | | | | | | | | 96 | 1,00 | 12,96 | 66 | 66,02 | 855,64 | 7 | BIIb EN 14411_K |
| | | | | | | | | 100 | 1,00 | 12,10 | 72 | 72,00 | 871,25 | 7 | BIIa EN 14411_J |
| | | | | | | | | 96 | 1,00 | 12,96 | 66 | 66,02 | 855,64 | 7 | BIIa EN 14411_J |
| | R1UE | | | R1UF | R1UG | | R1UI | 34 | 1,02 | 13,96 | 66 | 67,32 | 921,43 | 7,5 | BIIb EN 14411_K |
| | R1V0 | | | R1VA | R1VB | | R1VC | 36 | 1,08 | 16,87 | 66 | 71,28 | 1113,58 | 7,5 | BIIa EN 14411_J |
| | R1U5 | | | R1U7 | | | | 28 | 0,84 | 14,80 | 66 | 55,44 | 976,91 | 9* | BIIb EN 14411_K |
| | | | | | | | | 18 | 0,72 | 9,36 | 93 | 66,96 | 870,48 | 7 | BIII EN 14411_L |
| | | | | | | | | 18 | 0,72 | 9,11 | 93 | 66,96 | 847,05 | 7,5 | BIII EN 14411_L |
| | | | | R1SV | R1ST | R1SP | R1SX | 18 | 0,72 | 9,36 | 93 | 66,96 | 870,48 | 7 | BIII EN 14411_L |
| | | | | | | | | 18 | 0,72 | 9,11 | 93 | 66,96 | 847,05 | 7,5 | BIII EN 14411_L |
| | | | | | | | | 30 | 1,20 | 20,28 | 54 | 64,80 | 1095,15 | 8 | BIIb EN 14411_H |
| | | | | R1QA | | | | 30 | 1,20 | 20,28 | 54 | 64,80 | 1095,15 | 8 | BIIb EN 14411_H |
| | | | | | | | | 100 | 1,00 | 12,10 | 72 | 72,00 | 871,25 | 7 | BIIa EN 14411_J |
| | | | | | | | | 96 | 1,00 | 12,96 | 66 | 66,02 | 855,64 | 7 | BIIa EN 14411_J |