



0T96 Unitech Ceneri LUX 20x20
R1QX Unitech Giallo LUX 10x10
R1TC Unitech Mattia Giallo LUX 1,5x20

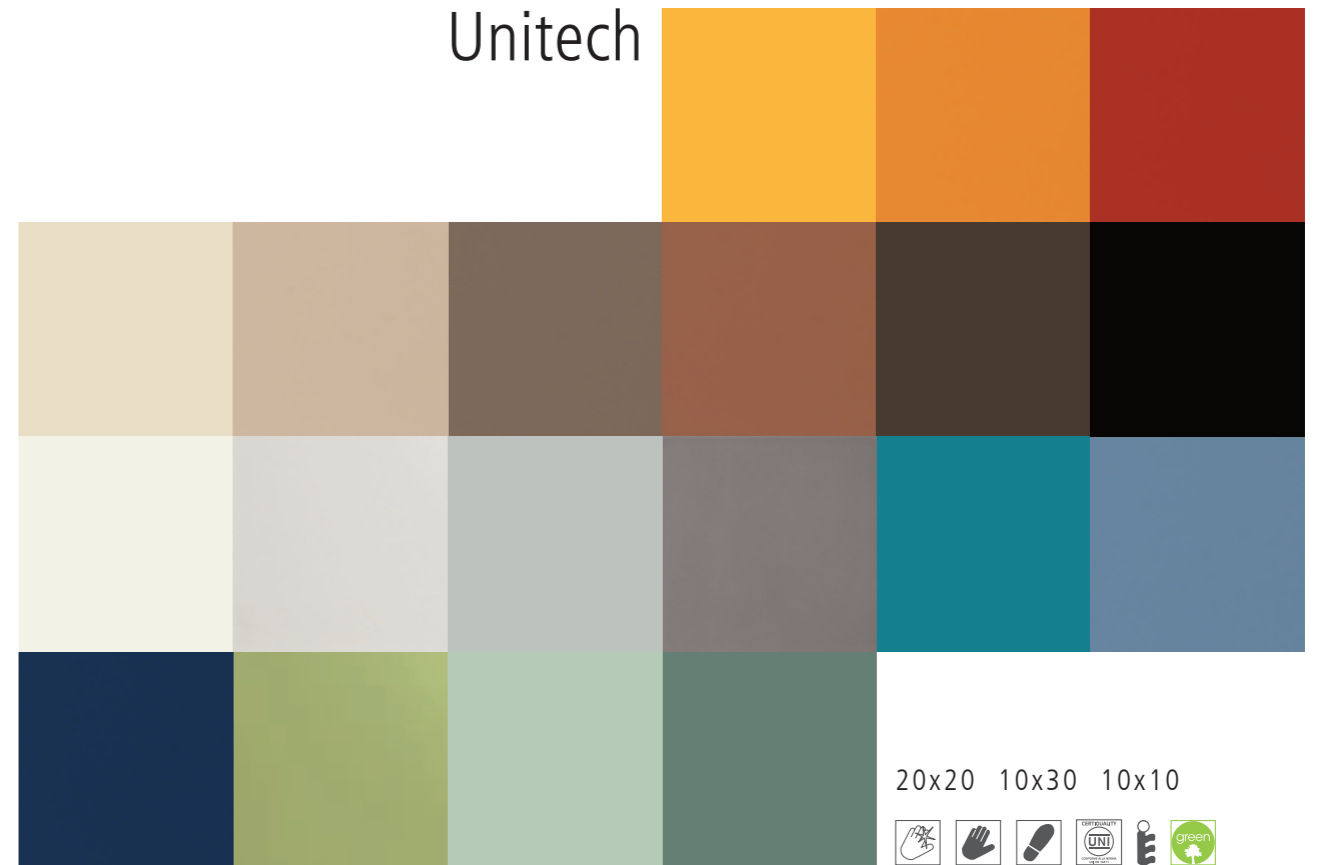


R1PN Unitech Smeraldo Lux 20x20
R1PK Unitech Menta Lux 20x20
94E2 Unitech Nero 10x10



R1UB Unitech Beige LUX 10x30
R1TY Unitech Beige Diamantato 10x30
R1PV Unitech Crema 20x20 pav. R9 A

Unitech



20x20 10x30 10x10



gamma cromatica

colour range / farbpalette / gamme chromatique / gama de colores / гамма цветов

LUX



Bianco Lux Cristallo Lux Argento Lux Cenere Lux Nero Lux



Beige Lux Crema Lux Incenso Lux Terra Lux Cacao Lux



Lime Lux Menta Lux Smeraldo Lux



Turchese Lux Topazio Lux Oceano Lux

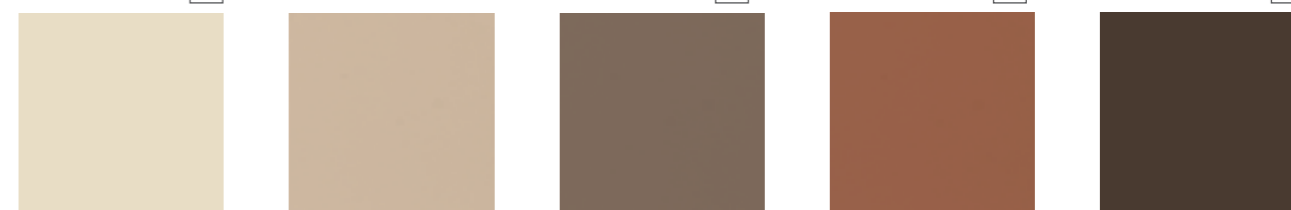


Giallo Lux Arancio Lux Rubino Lux

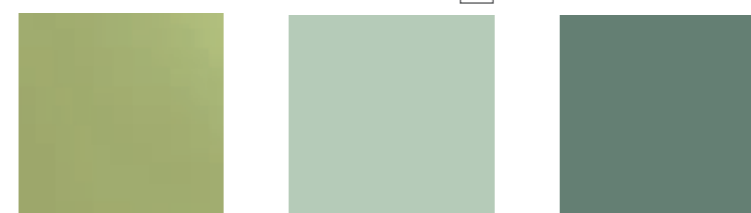
MATT



Bianco R9 R10B Cristallo Argento R9 R10B Cenere R9 R10B Nero R9 R10B



Beige Crema R9 R10B Incenso Terra Cacao



Lime Menta Smeraldo R9 R10B



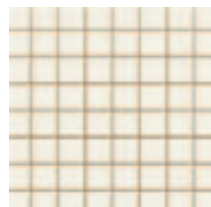
Turchese Topazio R9 R10B Oceano



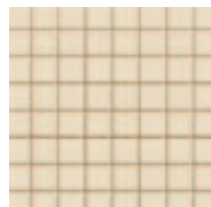
Giallo Arancio Rubino

tinte unite

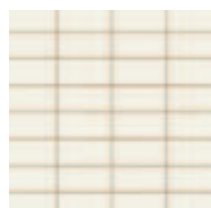
LUX / MATT



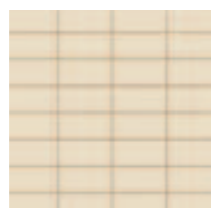
Inciso 1 Bianco



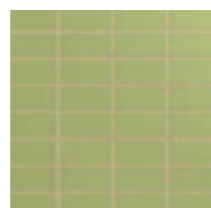
Inciso 1 Beige



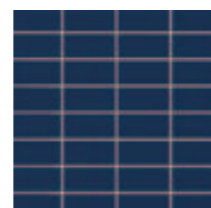
Inciso 2 Bianco



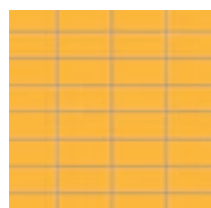
Inciso 2 Beige



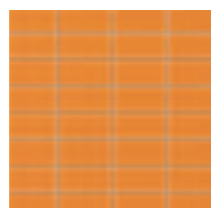
Inciso 2 Lime



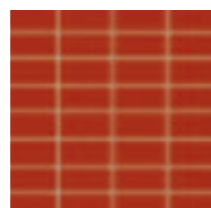
Inciso 2 Oceano



Inciso 2 Giallo



Inciso 2 Arancio

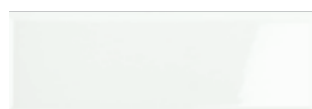


Inciso 2 Rubino

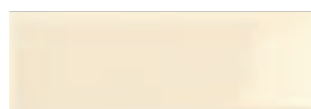
Nei fondi preincisi, per ottenere le fughe uguali, posare il prodotto con fuga minima / In order to ensure uniform joints, pre-cut base tiles should be laid with minimum joint / Dans les fonds pré-gravés, pour obtenir les mêmes joints partout, poser le produit avec un minimum de joint / Die vorgeschrittenen Grundfliesen müssen mit Minimalfuge verlegt werden / La colocación del producto deberá ser con una junta mínima / Надрезанная фоновая плитка укладывается с минимальным швом.

diamantato* lux

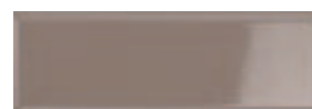
bevelled / abgerundet / biseauté / biselado / с фаской



Bianco



Beige



Incenso



Turchese



Oceano



Nero

pezzi speciali

trims / spezialteile / pièces spéciales / piezas especiales / специальные изделия

	BIANCO	CENERE	TOPAZIO		M ²	KG		GRUPPO EN
BTS. 10x20	98B9	98B8	R1RH	25	-	9,87	7,5	BIII EN 14411_L
CNE. 3x20	8523	8522	R1RR	10	0,06	0,90	-	BIII EN 14411_L
CNI. 3x20	8527	8526	R1RP	10	0,06	0,90	-	BIII EN 14411_L
AE. 3x10	R1RD	R1RL	R1RM	10	0,03	0,35	-	BIII EN 14411_L
AI. 3x10	R1RS	R1RJ	R1RK	10	0,03	0,35	-	BIII EN 14411_L
PI. 3x3	8519	8518	R1RY	10	0,01	0,10	-	BIII EN 14411_L
UI. 3x3	8515	8514	R1RT	10	0,01	0,10	-	BIII EN 14411_L
UE. 3x3	R1RU	R1RV	R1RW	10	0,01	0,10	-	BIII EN 14411_L

tech info



Ragno è un brand di Marazzi Group S.r.l. che è membro del Green Building Council Italia, associazione che promuove la cultura dell'edilizia sostenibile energeticamente efficiente, rispettosa dell'ambiente contribuendo a migliorare la qualità della vita dei cittadini attraverso lo standard di certificazione Leed®.

Unitech grazie al contenuto di materiale riciclato contribuisce al raggiungimento dei crediti LEED / Thanks to its recycled material content, Unitech is eligible for LEED credits / Unitech trägt durch seinen hohen Recyclinganteil zur Zuerkennung der LEED®-Punkte / Avec son contenu recyclé, Unitech permet d'obtenir les crédits LEED / Gracias a contener material reciclado, Unitech contribuye a la consecución de los créditos LEED / Благодаря содержанию повторно использованного материала коллекция Unitech помогает набрать кредиты LEED

*

Struttura a rilievo di spessore complessivo 9 mm, abbinabile al formato 10x30 Lux di spessore 7,5 mm / Relief texture with a total thickness of 9 mm; can be used along with the 7.5 mm thick 10x30 lux size / Reliefstruktur mit einer Gesamtstärke von 9 mm passend zum Format 10x30 lux mit 7,5 mm Stärke / Structure en relief d'une épaisseur totale de 9 mm pouvant être associée au format 10x30 lux de 7,5 mm d'épaisseur / Estructura en relieve de espesor total 9 mm combinable con el formato 10x30 lux de 7,5 mm de espesor / Рельефная структура общей толщиной 9 мм, сочетаемая с форматом 10x30 люкс толщиной 7,5 мм.

	BIANCO	CRISTALLO	ARGENTO	CENERE	NERO	BEIGE	CREMA	INCENSO	TERRA	CACAO	LIME	MENTA
20x20	0T98	R1PF	R1PC	0T96	0T97	R1PA	R1PD	R1PR	R1PJ	R1PL	R1PE	R1PK
20x20	RN46	R1NO	R1NL	RN50	RN51	R1NJ	R1NM	R1NZ	R1NS	R1NU	R1NN	R1NT
10x10	4Y29		R1QT	4Y31	4Y32	R1QR		R1RA			R1QV	
10x10 PC	4Y39											
10x10	94D9		R1QH	94E1	94E2	R1QF		R1QP			R1QJ	
10x10 PC	94F1											
10x30	R1U8		R1U9		R1UA	R1UB		R1UC		R1VD	R1UD	
10x30	R1UT		R1UU		R1UV	R1UW		R1UX		R1UY	R1UZ	
10x30 DIAMANTATO	R1TW				R1TX	R1TY		R1TZ				
20x20 INCISO 1	RV60					R1SM						
20x20 INCISO 1	RW09					R1RZ						
20x20 INCISO 2	RV53					R1SN					R1SR	
20x20 INCISO 2	RW02					R1SA						
20x20 R9	R1PG		R1PS	R1PW			R1PV					
20x20 R10 B	R1PY		R1PZ	R1QD			R1QC					
10x10 R12 GRIP	94G4											
10x10 R12 GRIP PC	94H0											

	SMERALDO	TURCHESE	TOPAZIO	OCEANO	GIALLO	ARANCIO	RUBINO	BOX			PALLET			GRUPPO EN	
									M ²	KG		M ²	KG		≠ mm
	R1PN	R1PP	R1PM	R1PI	R1PH	R1PB	R1PQ	40	1,60	19,48	75	120,00	1460,92	7	BIII EN 14411_L
	R1NW	R1NX	R1NV	R1NR	R1NQ	R1NK	R1NY	37	1,48	19,24	75	111,00	1443,06	7,5	BIII EN 14411_L
		R1RB		R1QY	R1QX	R1QS	R1QZ	100	1,00	13,10	72	72,00	943,15	7	BIIb EN 14411_K
								96	1,00	12,96	66	66,02	855,64	7	BIIb EN 14411_K
		R1QQ		R1QM	R1QL	R1QG	R1QN	100	1,00	12,10	72	72,00	871,25	7	BIIa EN 14411_J
								96	1,00	12,96	66	66,02	855,64	7	BIIa EN 14411_J
		R1UE		R1UF	R1UG		R1UI	34	1,02	13,96	66	67,32	921,43	7,5	BIIb EN 14411_K
		R1V0		R1VA	R1VB		R1VC	36	1,08	16,87	66	71,28	1113,58	7,5	BIIa EN 14411_J
		R1U5		R1U7				28	0,84	14,80	66	55,44	976,91	9*	BIIb EN 14411_K
								18	0,72	9,36	93	66,96	870,48	7	BIII EN 14411_L
								18	0,72	9,11	93	66,96	847,05	7,5	BIII EN 14411_L
				R1SV	R1ST	R1SP	R1SX	18	0,72	9,36	93	66,96	870,48	7	BIII EN 14411_L
								18	0,72	9,11	93	66,96	847,05	7,5	BIII EN 14411_L
								30	1,20	20,28	54	64,80	1095,15	8	BIIb EN 14411_H
				R1QA				30	1,20	20,28	54	64,80	1095,15	8	BIIb EN 14411_H
								100	1,00	12,10	72	72,00	871,25	7	BIIa EN 14411_J
								96	1,00	12,96	66	66,02	855,64	7	BIIa EN 14411_J